

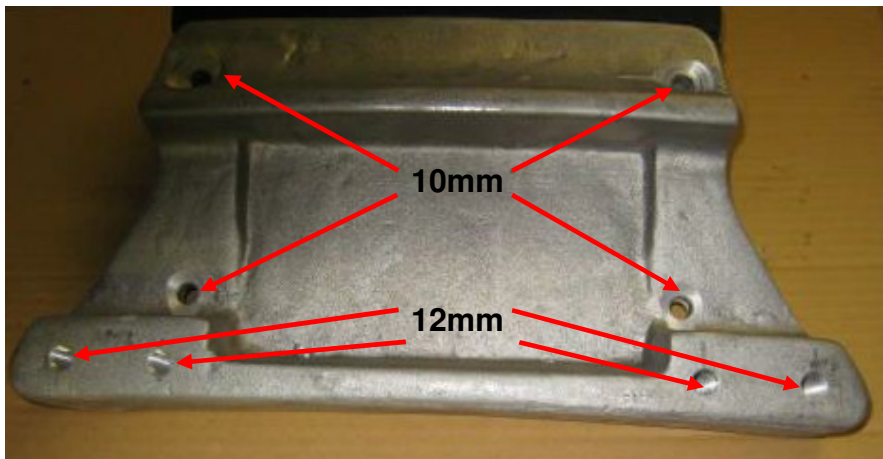


For your **SYNCRO**  
and **4WD** needs  
Modifications, Spare Parts  
International Shipping  
www.syncro-services.com  
Anso 2010 20, 29553 Bärenbühl, L...

## Mounting Manual for winches on T3 Syncro

### Section 1: standard mounting

1. Please read the manufacturers instructions for the electrical installation of the winch
2. install the switch box on winch (please read section 2 of this manual, in case you prefer alternative mounting option behind glove box)
3. Drill the holes in the mounting plate (start always with small drillers):
  - four 10mm (or 10.5mm) holes for the winch and mounting bracket on the mounting plate
  - four 12mm (or 12.5mm) for the bolts for mounting the plate on the Syncro



Pic. 1: Holes in mounting plate

4. place the mounting plate exactly in the middle of the front bumper and mark the position (pic. 2)



Pic. 2: placing mounting plate in middle

5. mark the four 12mm (or 12.5mm) holes on the front body and drill the holes absolutely vertically (pic. 3)



Pic. 3: holes in lower front body

6. install the false led / roller led on mounting bracket with the two short 10mm bolts and nuts provided in the installation kit of winch
7. install the winch on the mounting plate together with mounting bracket with the separately provided four 10mm bolts (nuts are included in installation kit of winch)
8. install the cables from switch box to winch (as shown in winch manual)
9. install the whole set-up on the car with the provided four 12mm bolts (see section 2 -option 1 of manual, in case you decide to install the pressure distribution plate (not included in delivery) and / or option 2 for metal poles to lower sub frame)
10. install main supply cable from battery (preferably use short cable lengths due to high currency throughput and use the battery under the driver / passenger seat, if present) to switch box (do not connect it to battery yet!)
  - use a fuse box with fuses allowing to transmit the maximum currency as shown in winch manual
  - do not bend cable over sharp edges
  - use rubber seals when cable is laid through parts of the body
  - avoid any potential damage to cable insulation *-danger-*
  - make sure that also proper connection between generator and the “winch battery” is given, so that the winch can work to its full capacity, otherwise the “winch battery” can run out of power quickly
11. connect the minus cable from winch to metal body of Syncro (e.g. with 8mm bolt) close to the winch



- in case of winch model MK12000C: connect the thin black cable from switch box to metal body, or mounting frame of switch box, when electrical connectivity is given, e.g. by removing a bit of the paint)
12. connect the plus cable form battery after making sure, that no short circuit exists
  13. plug in remote control cable and switch winch on at switch box
  14. test the operability of winch
    - if fine continue with next step
    - if not, check electrical connections
    - is winch engaged?
  15. install thin end of winch cable with clamp on the winch drum
  16. wind in winch cable tightly (attach weight to hook)
  17. finished!

## **Section 2: Advanced mounting options**

For further distribution of forces caused by the operating winch, it is advisable to consider further options, as described in this section with advanced mounting options.

For installation of winches with a capacity of more than 3 tonnes we advise to follow option 1 and 2.

For better protection of the electrical unit (switch box) option 3 is recommended.

### **Option 1:**

#### **Installation of pressure distribution plate**

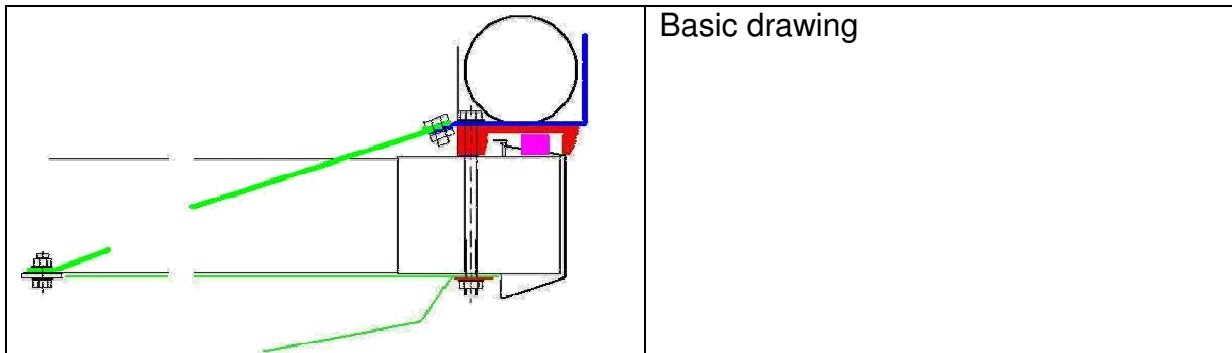
The pressure distribution plate connects the four 12mm bolts which hold the whole set-up on the car. As these bolts can be mounted very tightly the lower body part might face deformations. For distribution of these pressure forces a plate can easily be manufactured and installed.

We've used a 3mm thick steel plate, only a bit wider than the nuts.  
For further photos see "option 2".



**Option 2:  
 Installation of metal poles to lower sub frame**

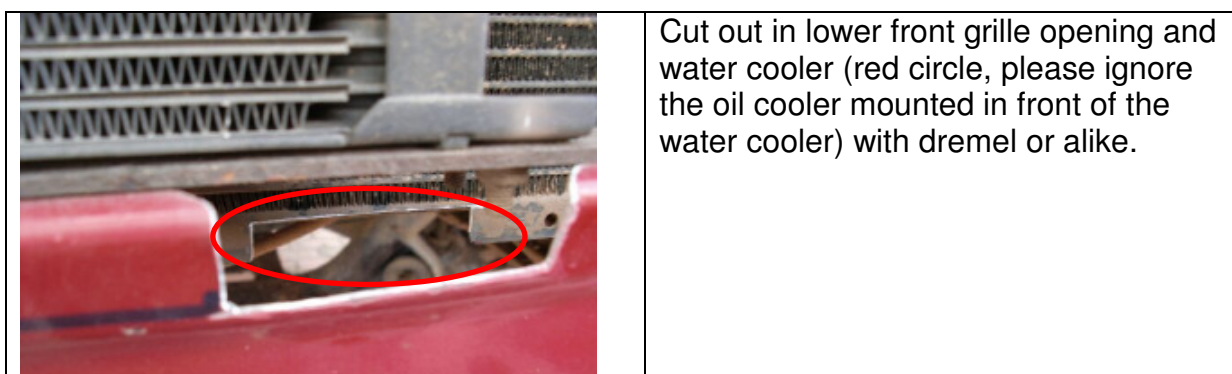
These poles are used to transfer the forces from the winch into the lower sub frame for having a stronger and stiffer mounting on the Syncro. This is an advantage when strong winches with a pulling capacity of more than 3 tonnes are installed, as the body of the Syncro has a limited strength in the front mounting place.



The poles we use have a diameter of 10mm. The ends of the poles have to be flattened with a hammer for drilling the 12mm holes (winch side) / 10mm holes (sub frame side). They can easily be manufactured in a normal equipped workshop, no professional tools are required.

The front parts of the poles are to be attached to the inner mounting bolts of the winch mounting plate (12mm).

As not a lot of place is available for the installation of the poles the front part of the Syncro grille opening has to be cut a bit. See the following pics.





For your **SYNCRPO**  
and **4WD** needs

Modifications, Spare Parts  
International Shipping  
www.syncro-services.com  
Ansobergo 2a, 29553 Baza, Málaga, Spain



Cut out areas after first painting and drilled holes for installation of winch mounting plate.



Installed poles (red circle: attached to lower sub frame) and pressure distribution plate

**Option 3:  
 Installation of switch box behind glove box**

This is a good method for providing perfect weather and damage protection for the switch box. Also misuse of the winch can't happen and installation of an additional main switch inside the car can be avoided, as the original one from the switch box can still be used.

**Step 1:** remove glove box

	<p><b>Step 2:</b> don't install the switch box on provided mounting frame, open it (remove the 4 screws and the one in the middle of the red switch handle, take the cover off and take out plug for remote control cable)</p> <p><b>Step 3:</b> cut the three cables of plug and extend them for mounting the plug e.g. in the lower dashboard cover</p>
	<p><b>Step 3a:</b> install plug for remote control, e.g. in lower dashboard cover</p>
	<p><b>Step 4:</b> mount the switch box including its mounting frame in the free space above glove box with the original main switch facing to inside</p> <p><b>Step 5:</b> Mark the holes for the cables and drill holes in the wall (you can see the three cables combined to one with insulation tape for the remote control plug)</p>



For your **SYNCRPO**  
and **4WD** needs

Modifications, Spare Parts  
International Shipping  
www.syncro-services.com  
Ansobergo 2a, 29553 Bienesol, Málaga



**Step 5:** Cut the glove box for reaching the main switch easier.



**Step 6:** Cables from switch box coming out behind head light and go straight to winch.

- do not bend cable over sharp edges
- use rubber seals where cable go through body
- avoid any potential damage to cable insulation -*danger*-